

Improving Access to Demographic Data for the Aging Network in Virginia

Virginia Demographic Services Webinar

March 21, 2024 | 1:00 PM EST

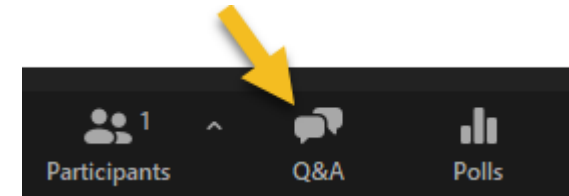
Sol Baik, PhD

sbaik@virginia.edu



Weldon Cooper Center
for Public Service

Before we begin...



- Please use the Q&A Box for any questions to the presenter.
- All questions will be addressed at the end during the Q&A.
- For additional questions after the webinar, contact sbaik@virginia.edu.

Speakers



Sol Baik, PhD
Senior Researcher
UVA Weldon Cooper Center



Qian Cai, PhD
Director, Demographics Research Group
UVA Weldon Cooper Center



Shonel Sen, PhD
Projections Program Manager
UVA Weldon Cooper Center

In this Webinar

- Navigate Virginia Demographic Service Data Products
- Understand Data Source Considerations for Interpretation and Usage
- Explain the Population Projections of Older Adults in Virginia



Introductory Remarks

QIAN CAI / DIRECTOR, DEMOGRAPHICS RESEARCH GROUP



Virginia Demographic Data Service

SOL BAIK / SENIOR RESEARCHER

Types of Demographic Data Services

- Data Briefs on Aging
- Data Dashboards on Aging
- Data Tables
- Data Request Service
- Workshops / Webinars

Common Feedback from Users

1. Geography: Planning and Service Area (PSA) vs. Locality (County/City)
2. Consistency in Age Groups
3. Additional Data
4. Changes Over Time

Recent Updates from User Feedback

1. Improved **usability and design** of data dashboards.
2. Integrated **locality-level data** into data dashboards and data tables.
3. Updated **60+ population data** across all variables using **multiple data sources**.
4. Added 2030-2050 **population projections** of the 60+ population.
5. Included **standard errors** for survey-based variables in locality-level data tables.
6. Anticipate the availability of initial **trend metrics** by 2025.

Available Geography Levels

| | State (Virginia) | PSA | Locality |
|-----------------|------------------|-----|----------|
| Data Dashboards | X | X | X |
| Data Tables | X | X | X |
| Data Briefs | X | X | |

Data Sources Used in Data Products

- U.S. Census Bureau. (2023). American Community Survey (ACS) 5-year Estimates Special Tabulation on Aging and Disability 2016-2020.
- U.S. Census Bureau. (2022). ACS 5-year Estimates 2016-2020.
- U.S. Census Bureau. (2023). Population Estimates Special Tabulation 2020.
- University of Virginia Weldon Cooper Center for Public Service. (2023). Virginia Population Projections.

Available Variables by Category

| Category | Variable |
|-----------------------------|--|
| Demographics | Population Estimates & Projections , Age, Sex, Race/Hispanic Origin, Foreign-Born Status , Language, Veteran Status , Educational Attainment |
| Family & Living Arrangement | Grandparenting, Marital Status, Living Arrangement (including Living Alone) |
| Economic Indicators | Poverty Status, SNAP/Food Stamp, Labor Force Participation, Renter/Homeowner Status |
| Health & Disability | Disability Status, Multiple Disabilities, Health Insurance, Disability by Type (Difficulties with Mobility, Cognition, Hearing, Independent Living, Self-Care, and Vision) |

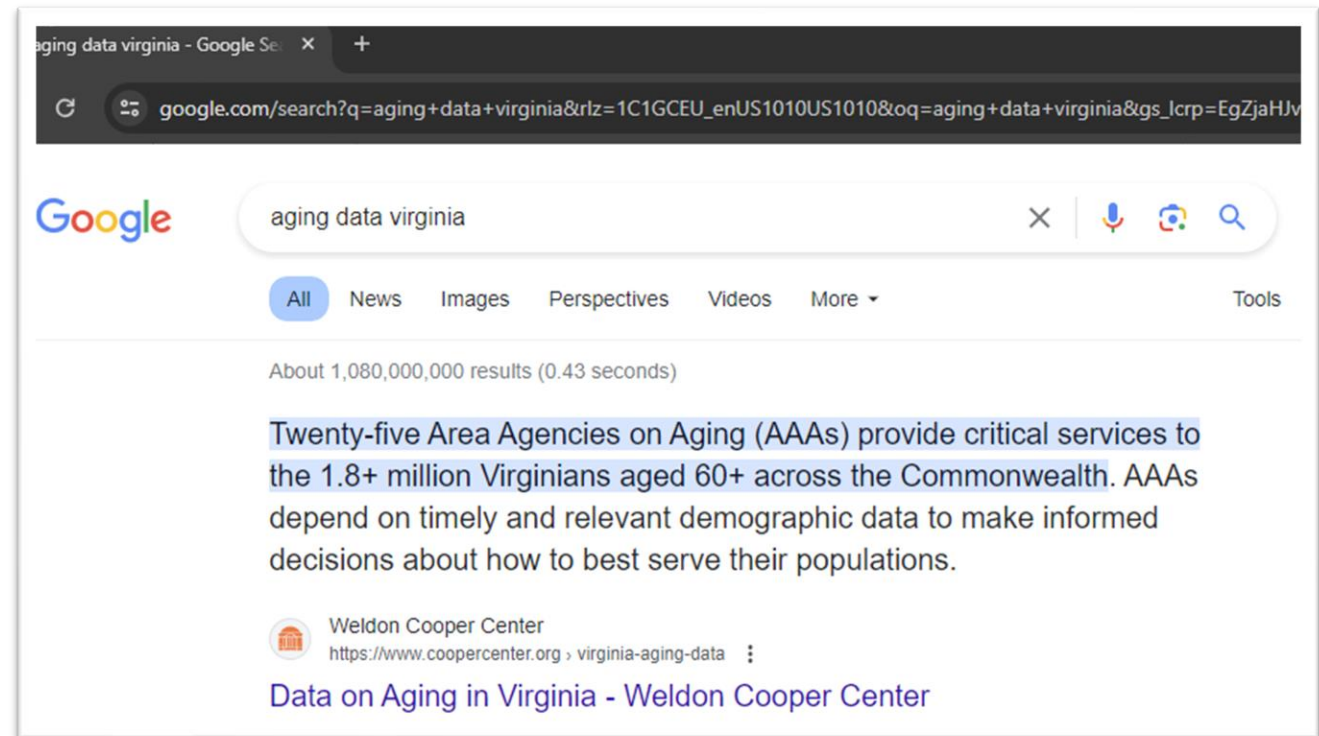
Interpreting Data Wisely

- For smaller areas or sensitive demographics,
 - Be mindful of standard errors.
 - Note data suppression for privacy.
- When interpreting the data,
 - Consider contextual factors, historical trends, and methodological limitations.



To Access the Data Products

1. Google search
2. Link to the website



<https://www.coopercenter.org/virginia-aging-data>



Twenty-five Area Agencies on Aging (AAAs) provide critical services to the 1.8+ million Virginians aged 60+ across the Commonwealth. AAAs depend on timely and relevant demographic data to make informed decisions about how to best serve their populations. The data products listed below aim to assist the AAAs in understanding some of the basic demographic characteristics of older adults in Virginia as a whole, and in each of Virginia's Planning and Service Areas (PSAs).

DATA DASHBOARDS ON AGING IN VIRGINIA

Citation: University of Virginia Weldon Cooper Center for Public Service. (2024). *Data Dashboard on Aging in Virginia*. Retrieved from <https://coopercenter.org/virginia-aging-data>.

Data Dashboard on Aging in Virginia

Population | Age | Sex | Race | Foreign Born | Language | Veteran | Education

Year: 2020 | Geography: AAA Locality (All) | Reset Filters

2020 data on 60+ Population Estimates for all AAAs in Virginia

60+ Population | Compared to Virginia

| PSA | AAA | Estimates | Percent |
|-----|--------------------------|-----------|---------|
| 1 | Mountain Empire Older... | 23,966 | 28.8% |

DATA TABLES ON AGING IN VIRGINIA

Demographics



Data tables include: Total 60+ population, age, sex, race/Hispanic origin, foreign born status, language spoken at home, veteran status, and educational attainment

- **by PSA:** 2020
- **by Locality:** 2020

Family & Living Arrangement



Economic Indicators



Health & Disability



AutoSave On 2020_Demographics_Tables_by_PSA_2024-02-16 Last Modified: February 16

File Home Insert Page Layout Formulas Data Review View Automate Developer Help

Clipboard Font Alignment Number

A3

Total Population 60 Years and Over (by Planning and Service Area [PSA])

Data Source: U.S. Census Bureau, Population Estimates Program Special Tabulation 2020.

| PSA | Agency | Estimate | Percent |
|-----------------|--|------------------|--------------|
| Virginia | | 1,912,111 | 22.2% |
| 1 | Mountain Empire Older Citizens, Inc. | 23,966 | 28.8% |
| 2 | Appalachian Agency For Senior Citizens, Inc. | 30,920 | 30.8% |
| 3 | District Three Governmental Cooperative | 57,360 | 30.8% |
| 4 | New River Valley Agency on Aging | 40,511 | 22.3% |
| 5 | Local Office on Aging, Inc. | 76,063 | 27.0% |
| 6 | Valley Program for Aging Services, Inc. | 77,285 | 25.4% |
| 7 | Shenandoah Area Agency on Aging, Inc. | 62,696 | 25.8% |
| 8A | Alexandria Division of Aging & Adult Services | 27,555 | 17.3% |
| 8B | Arlington Agency on Aging | 37,321 | 15.6% |
| 8C | Fairfax Area Agency on Aging | 237,173 | 20.0% |
| 8D | Loudoun County Area Agency on Aging | 60,945 | 14.4% |
| 8E | Prince William Area Agency on Aging | 84,242 | 15.5% |
| 9 | Rappahannock-Rapidan Community Services Board | 46,248 | 25.2% |
| 10 | Jefferson Area Board for Aging | 66,324 | 25.6% |
| 11 | Central Virginia Alliance for Community Living, Inc. | 68,072 | 26.0% |
| 12 | Southern Area Agency on Aging | 74,445 | 31.1% |
| 13 | Lake Country Area Agency on Aging | 26,169 | 32.7% |
| 14 | Piedmont Senior Resources Area Agency on Aging, Inc. | 27,340 | 27.2% |
| 15 | Senior Connections, Capital Area Agency on Aging, Inc. | 251,051 | 22.4% |
| 16 | Rappahannock Area Agency on Aging, Inc. | 71,574 | 18.6% |
| 17-18 | Bay Aging | 47,933 | 33.5% |
| 19 | Crater District Area Agency On Aging | 42,108 | 23.4% |
| 20 | Senior Services of Southeastern Virginia | 243,982 | 20.3% |
| 21 | Peninsula Agency on Aging, Inc. | 115,191 | 23.1% |
| 22 | Eastern Shore Area Agency on Aging | 15,637 | 34.3% |

| | | | |
|-------|--|---------|-------|
| 17-18 | Bay Aging | 47,933 | 33.5% |
| 19 | Crater District Area Agency On Aging | 42,108 | 23.4% |
| 20 | Senior Services of Southeastern Virginia | 243,982 | 20.3% |
| 21 | Peninsula Agency on Aging, Inc. | 115,191 | 23.1% |
| 22 | Eastern Shore Area Agency on Aging | 15,637 | 34.3% |

Population Age Sex Race_Hispanic Foreign Born Language Veteran Education

DATA BRIEFS: DEMOGRAPHIC CHARACTERISTICS OF OLDER ADULTS IN VIRGINIA

Citation: University of Virginia Weldon Cooper Center for Public Service. (2024). *Data Brief: Demographic Characteristics of Older Adults in Virginia*. Retrieved from <https://coopercenter.org/virginia-aging-data>.

Data Briefs for Virginia and its 25 PSAs



Virginia

PSA 1 | PSA 2 | PSA 3 | PSA 4 | PSA 5 | PSA 6 | PSA 7

PSA 8A | PSA 8B | PSA 8C | PSA 8D | PSA 8E | PSA 9

PSA 10 | PSA 11 | PSA 12 | PSA 13 | PSA 14 | PSA 15

PSA 16 | PSA 17-18 | PSA 19 | PSA 20 | PSA 21 | PSA 22

DATA BRIEF

February 2024

Demographic Characteristics of Older Adults in Virginia

Population

Projections

Gender, Race, & Hispanic Origin

Marital Status & Living Arrangement

Language

Educational Attainment

Poverty & Economic Status

Disability & Health

POPULATION

DATA BRIEF

Demographic Characteristics of Older Adults in Virginia

There are **25 Area Agencies on Aging (AAA)** in Virginia.

As of 2020, there were **1,912,111 Virginians aged 60+**, accounting for **22.2% of the total population** in the Commonwealth.¹

POPULATION PROJECTIONS

DATA BRIEF

Demographic Characteristics of Older Adults in Virginia

| Year | Population (60+) | % of Total Population |
|------|------------------|-----------------------|
| 2010 | 1,419,306 | 17.7% |
| 2020 | 1,944,703 | 22.5% |
| 2030 | 2,265,231 | 24.8% |
| 2040 | 2,339,201 | 24.0% |
| 2050 | 2,451,913 | 23.3% |

By 2030, Virginians aged 60+ will comprise **24.8%** of the total population in the Commonwealth.²

The 60+ population in Virginia is expected to grow steadily but the **rate of growth is projected to decline** each successive decade until 2050.²

GENDER, RACE, & HISPANIC ORIGIN

DATA BRIEF

Demographic Characteristics of Older Adults in Virginia

Percentage of 60+ Adults by Race & Hispanic Origin

54.1% of 60+ Virginians were **women** and **45.9%** men.¹

Among 60+ Virginians, **3.8%** were **Hispanic**.¹

Other non-Hispanic racial groups consisted of less than 2%.¹

MARITAL STATUS & LIVING ARRANGEMENT

DATA BRIEF

Demographic Characteristics of Older Adults in Virginia

60+ Adults by Living Arrangement

24% of 60+ Virginians **lived alone**.³

56.2% of 60+ Virginians were married or partnered, followed by **18.7%** widowed, **14.6%** divorced, **4%** separated, and **6.5%** never married/single.³

LANGUAGE SPOKEN AT HOME

DATA BRIEF

Demographic Characteristics of Older Adults in Virginia

60+ Adults by Language Spoken Most at Home

11% of 60+ Virginians were foreign-born immigrants.³

Among 60+ Virginians, **10.5%** said they mostly **spoke other languages** than English at home.³

EDUCATIONAL ATTAINMENT

DATA BRIEF

Demographic Characteristics of Older Adults in Virginia

13.1% of 60+ Virginians had less than a high school education.³

16.2% of 60+ Virginians had graduate or professional degrees.³

POVERTY & ECONOMIC STATUS

DATA BRIEF

Demographic Characteristics of Older Adults in Virginia

7.7% of 60+ Virginians were **in poverty**.³

7.1% of households with 60+ older adults **received food stamps or SNAP**.⁴

19.4% of 60+ households **rented their houses**.⁴

DISABILITY & HEALTH

DATA BRIEF

Demographic Characteristics of Older Adults in Virginia

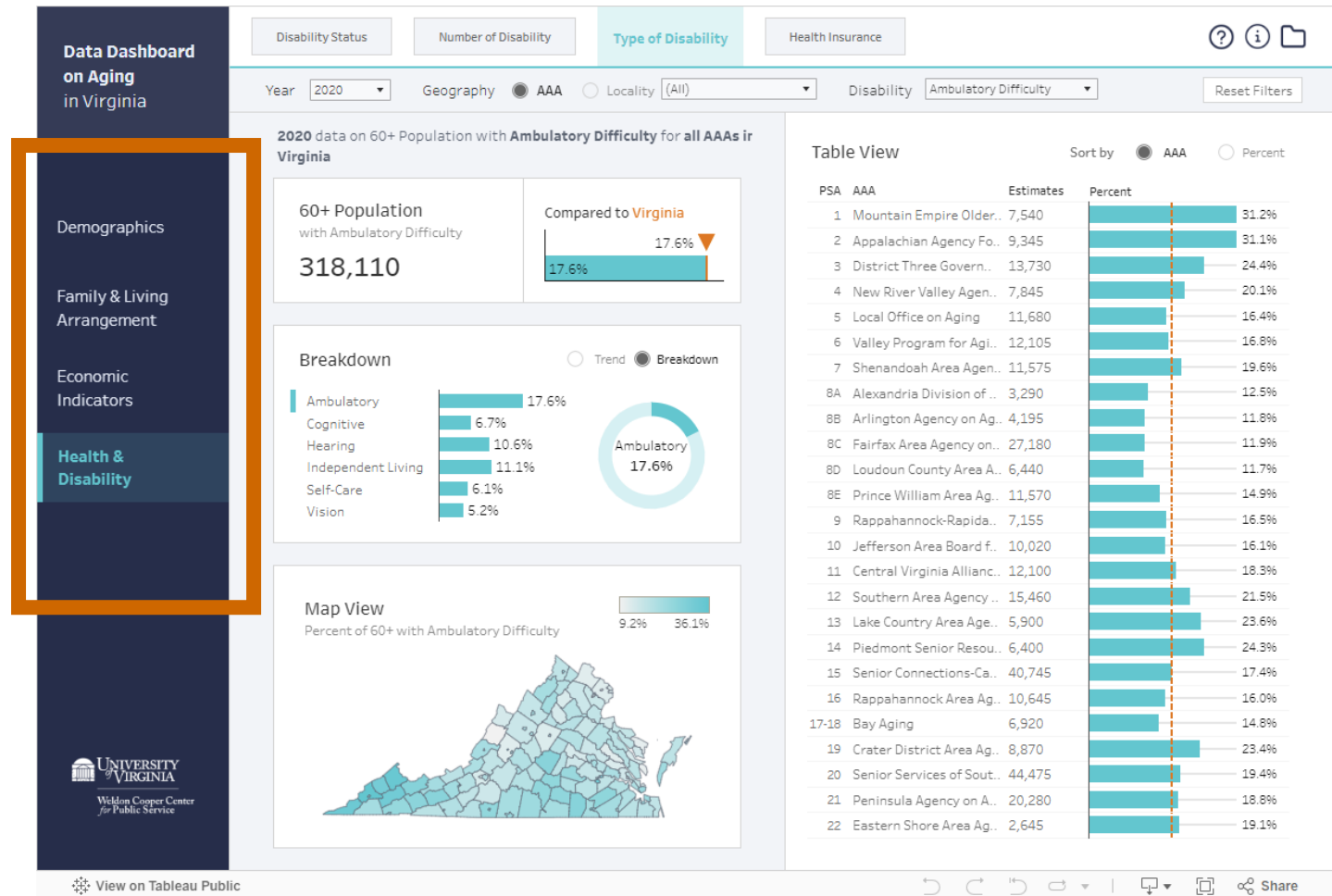
60+ Adults by Disability Type

28.1% of 60+ Virginians had a **disability** and **14.4%** had **two or more types of disabilities**.³

Among those with a disability, **1.9%** had **no health insurance coverage**.³

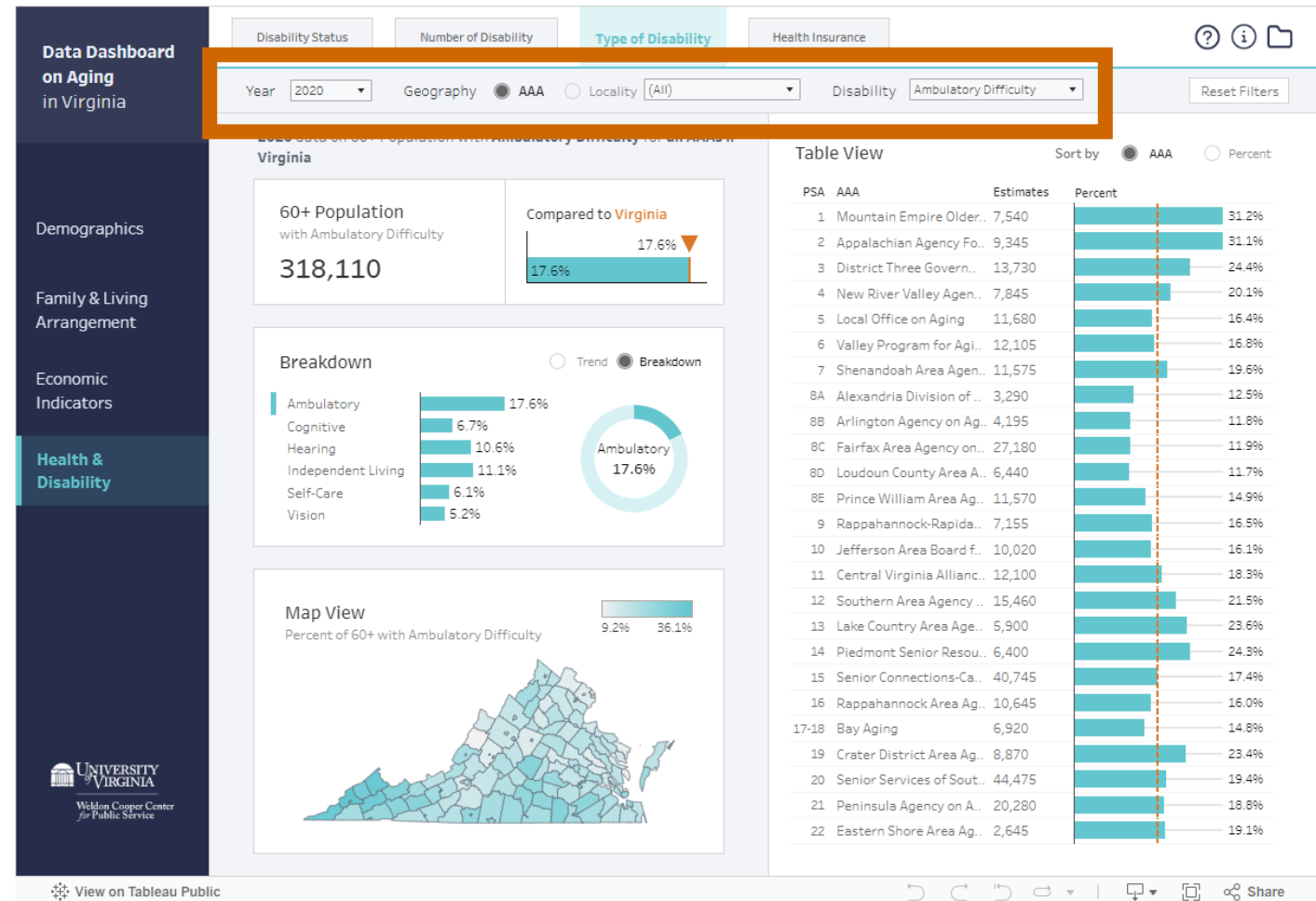
New Dashboard Design Features

1. Enhanced Navigation across Categories
2. Filters by Year, Geography (AAA/Locality), Additional Options



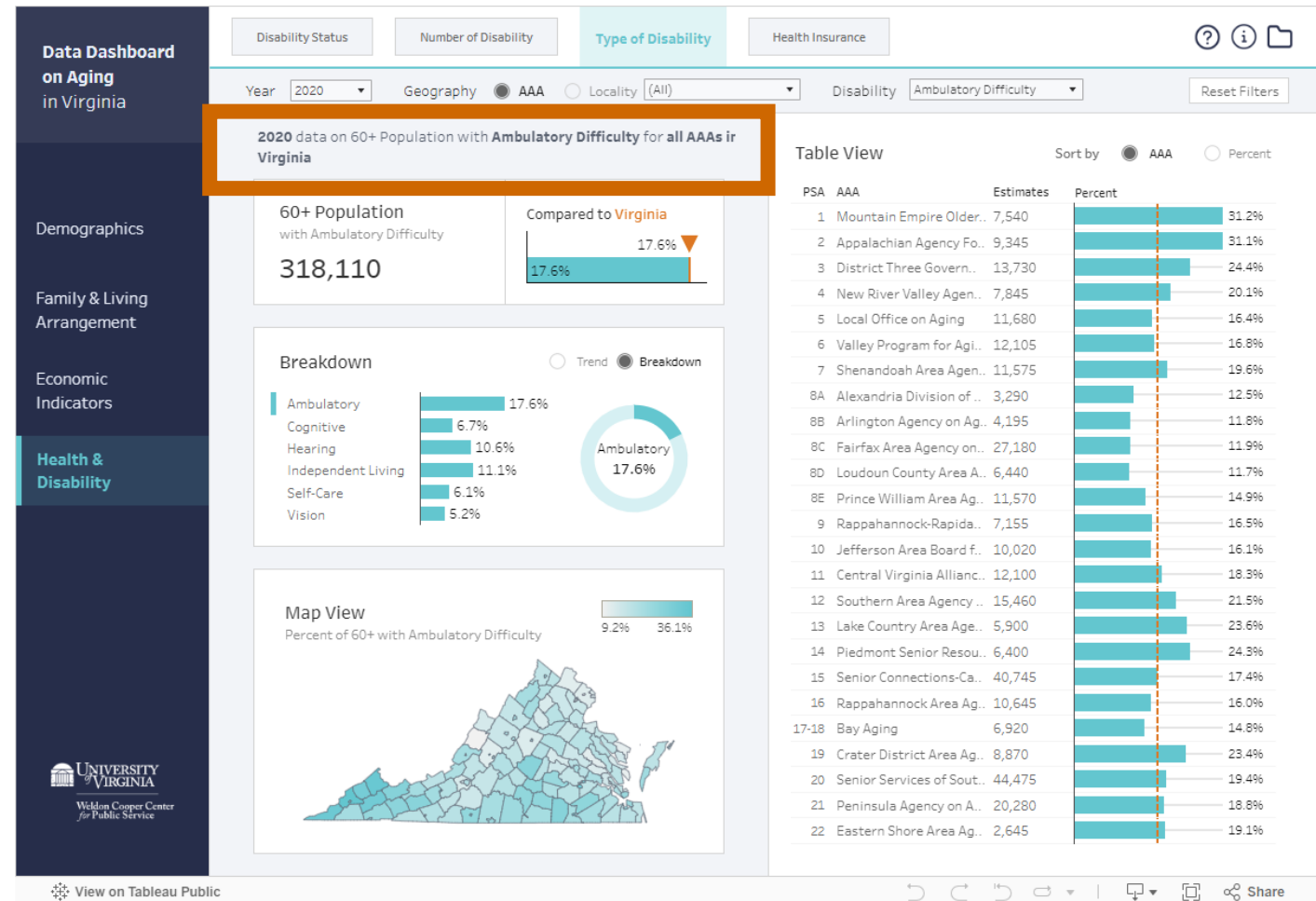
New Dashboard Design Features

1. Enhanced Navigation across Categories
2. Filters by Year, Geography (AAA/Locality), Additional Options



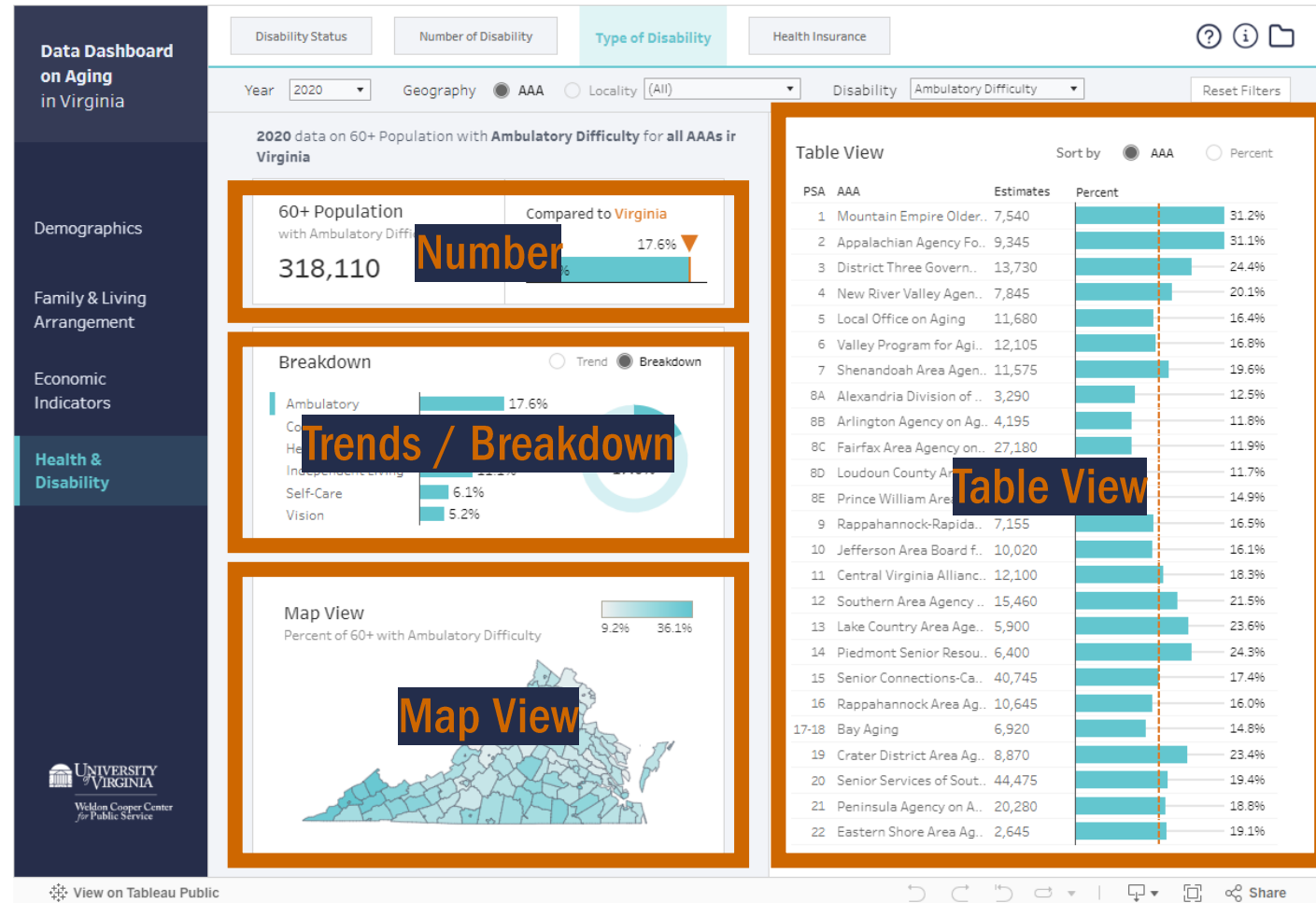
New Dashboard Design Features

3. Detailed Text Explanations on Selected Filters
4. Expanded Metrics (e.g., Number, Trends [coming in 2025], Breakdown, Map, Table)



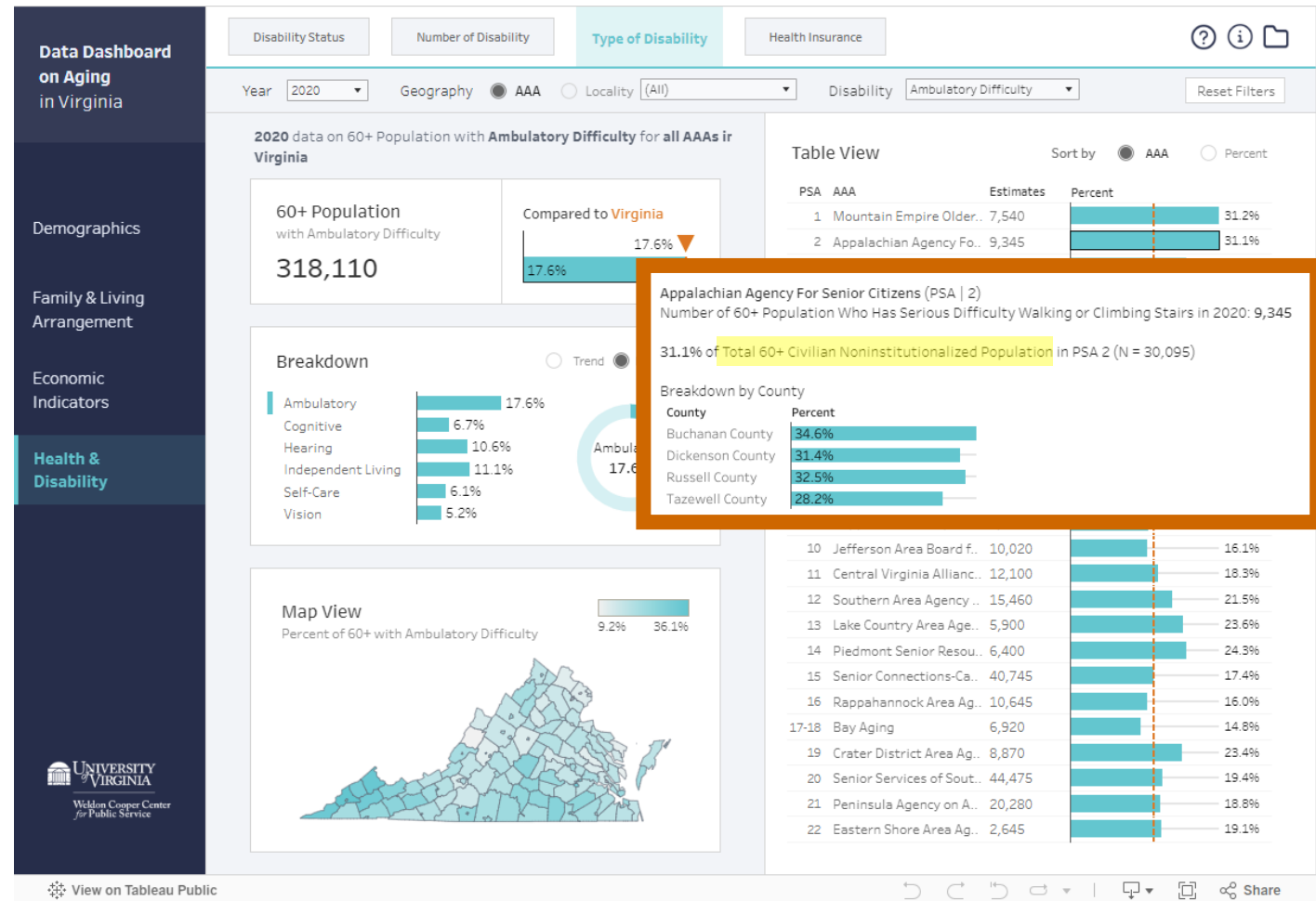
New Dashboard Design Features

3. Detailed Text Explanations on Selected Filters
4. Expanded Metrics (e.g., Number, Trends [coming in 2025], Breakdown, Map, Table)



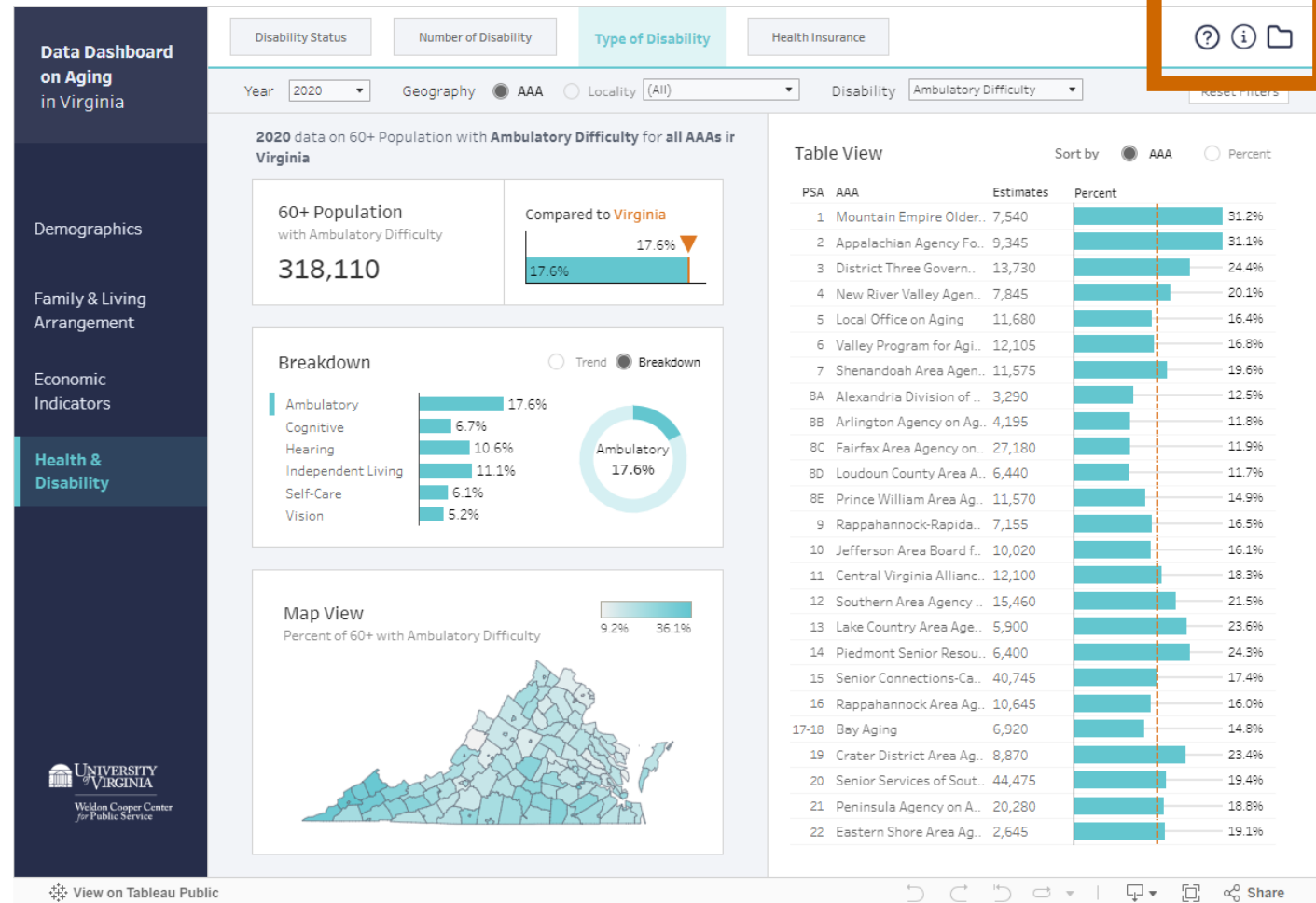
New Dashboard Design Features

5. Informative Tooltips
6. Instructions on How to Use the Dashboard
7. Clear Citations for Data Sources per Variable
8. Simple Data Table Download



New Dashboard Design Features

5. Informative Tooltips
6. Instructions on How to Use the Dashboard
7. Clear Citations for Data Sources per Variable
8. Simple Data Table Download



New Dashboard Design Features

5. Informative Tooltips
6. Instructions on How to Use the Dashboard
7. Clear Citations for Data Sources per Variable
8. Simple Data Table Download

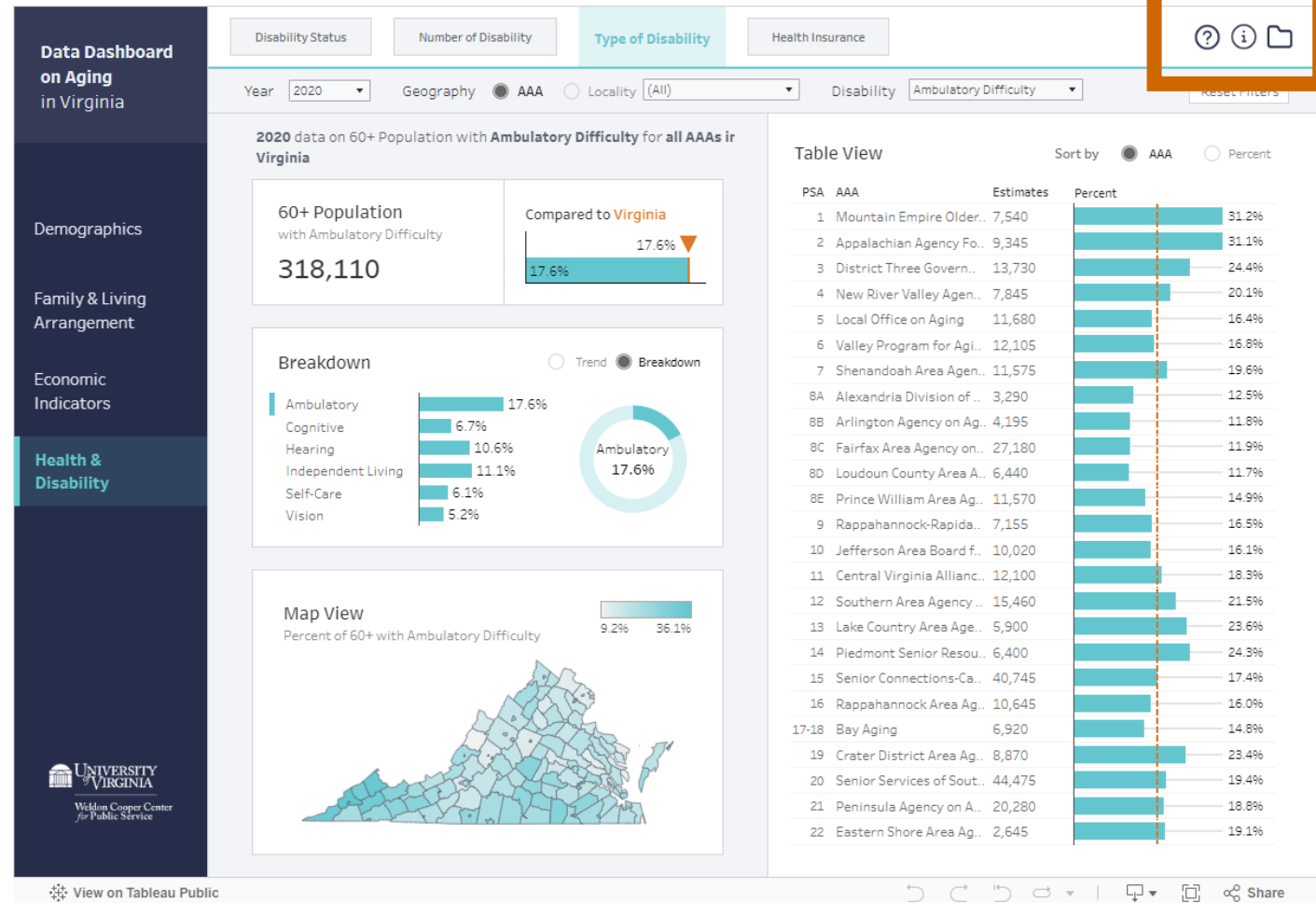
The screenshot shows a Tableau dashboard with a dark blue sidebar on the left containing categories: Demographics, Family & Living Arrangement, Economic Indicators, and Health & Disability (highlighted). The main content area has a top navigation bar with tabs: Disability Status, Number of Disability, Type of Disability (selected), and Health Insurance. Below the navigation bar are filters for Year (2020), Geography (AAA selected), Locality (All), and Disability (Ambulatory Difficulty). A 'CLICK TO CLOSE' button is visible in the top right corner. The dashboard features a chart and a data table. Annotations include:

- Dashboard Navigation:**
 - Step 01** Select a category from the blue panel on the left to view a dashboard
 - Step 02** Select a variable along the top navigation panel
 - Step 03** Select a year, geography (AAA or Locality), and/or other applicable values
- Dashboard Features:**
 - Step 04** Click to show or hide the How-To-Use-Guide
 - Step 05** Click to show or hide the Data Sources
 - Step 06** Click to show or hide the Data Tables

At the bottom left, there is a logo for the University of Virginia and the Weldon Cooper Center for Public Service. At the bottom right, there is a 'View on Tableau Public' link and a 'Share' button.

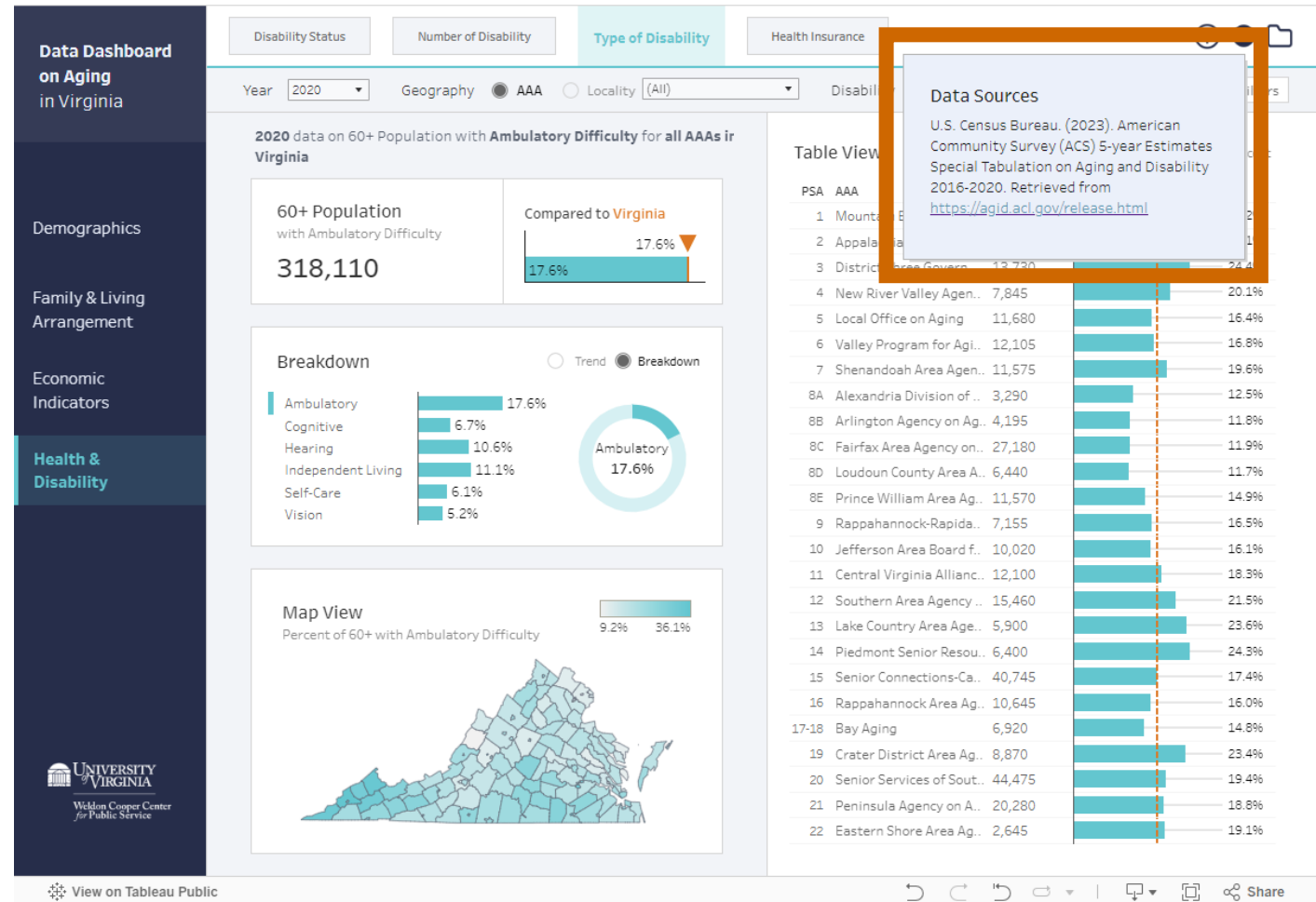
New Dashboard Design Features

5. Informative Tooltips
6. Instructions on How to Use the Dashboard
7. Clear Citations for Data Sources per Variable
8. Simple Data Table Download



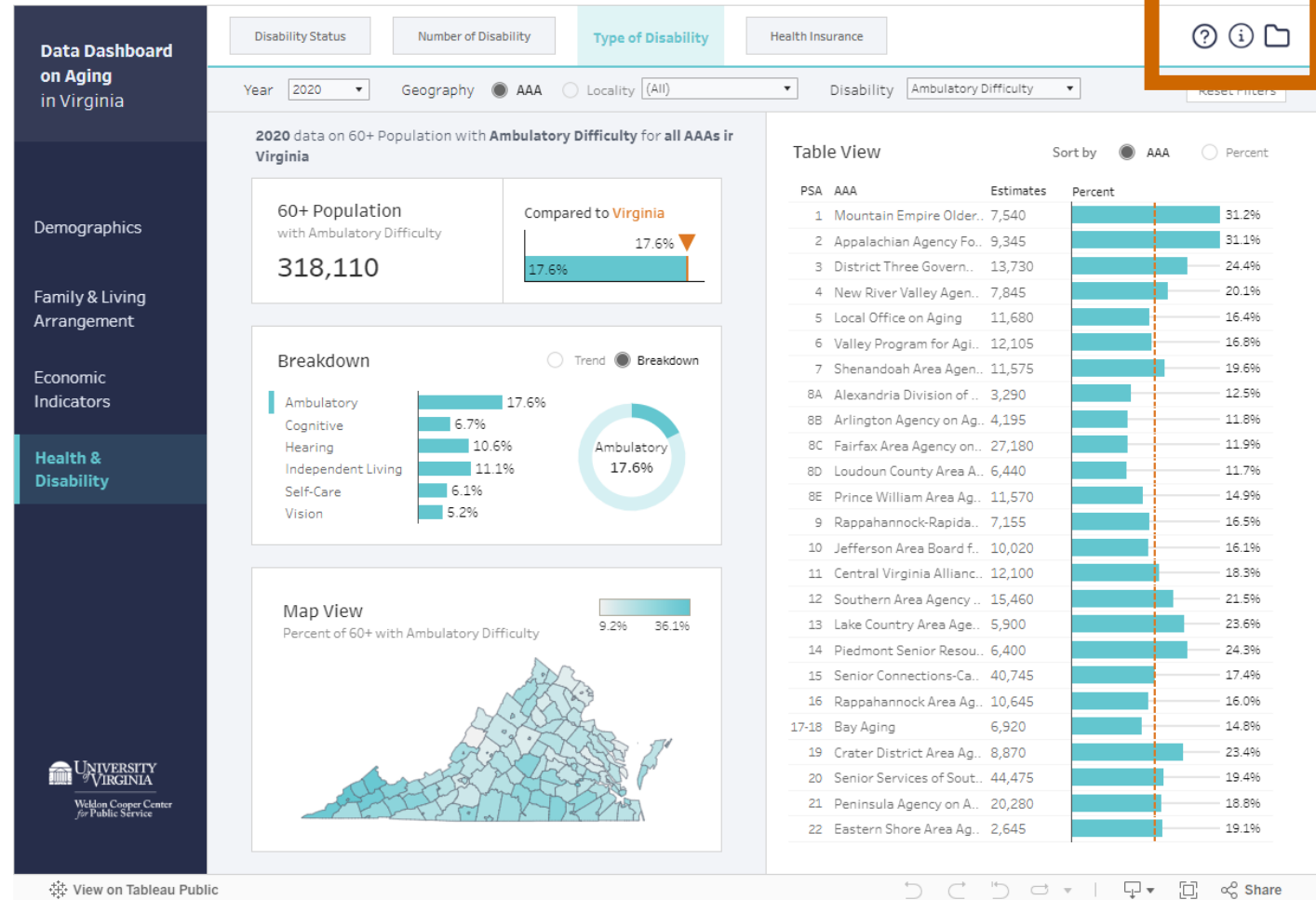
New Dashboard Design Features

5. Informative Tooltips
6. Instructions on How to Use the Dashboard
7. Clear Citations for Data Sources per Variable
8. Simple Data Table Download



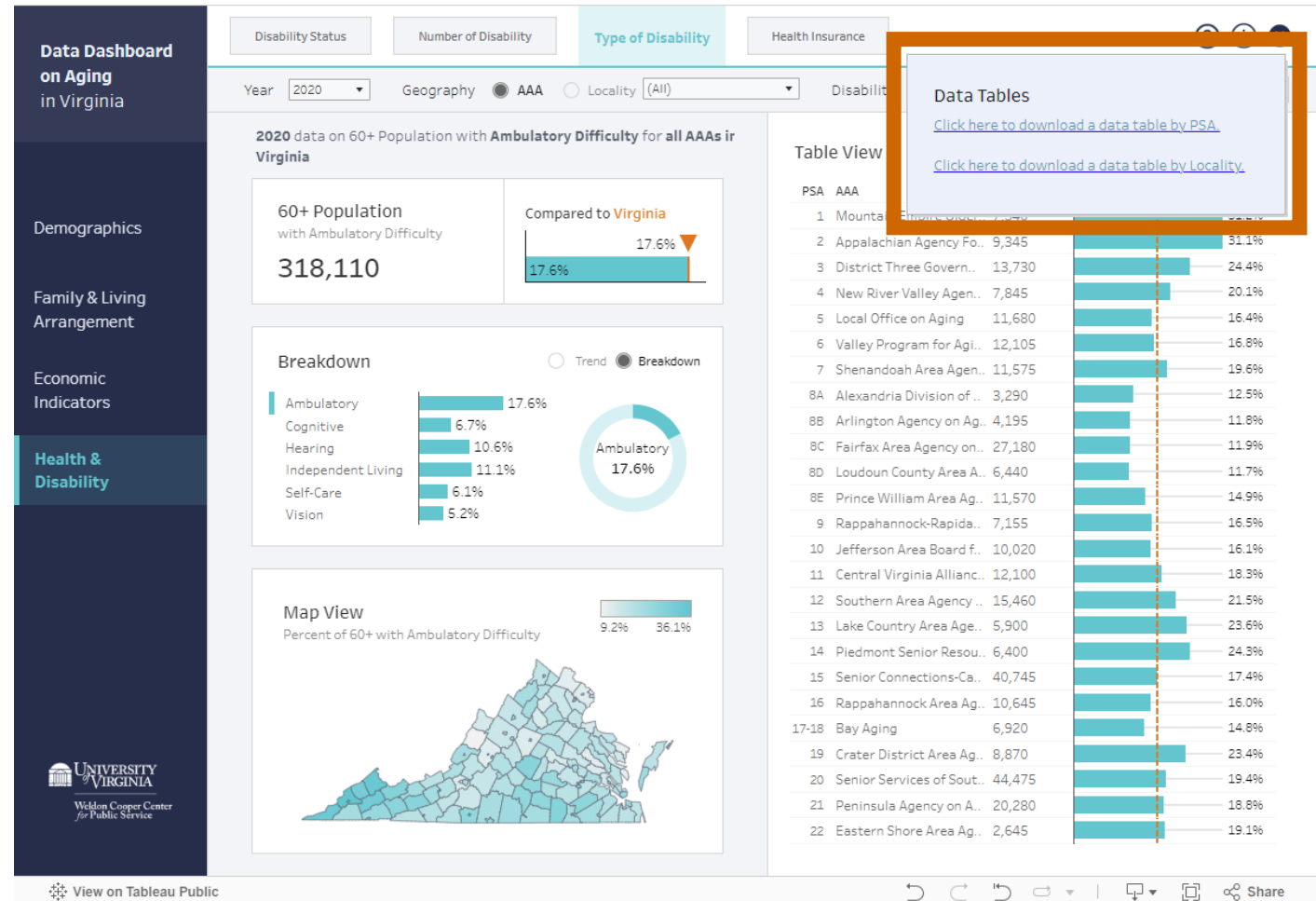
New Dashboard Design Features

5. Informative Tooltips
6. Instructions on How to Use the Dashboard
7. Clear Citations for Data Sources per Variable
8. Simple Data Table Download



New Dashboard Design Features

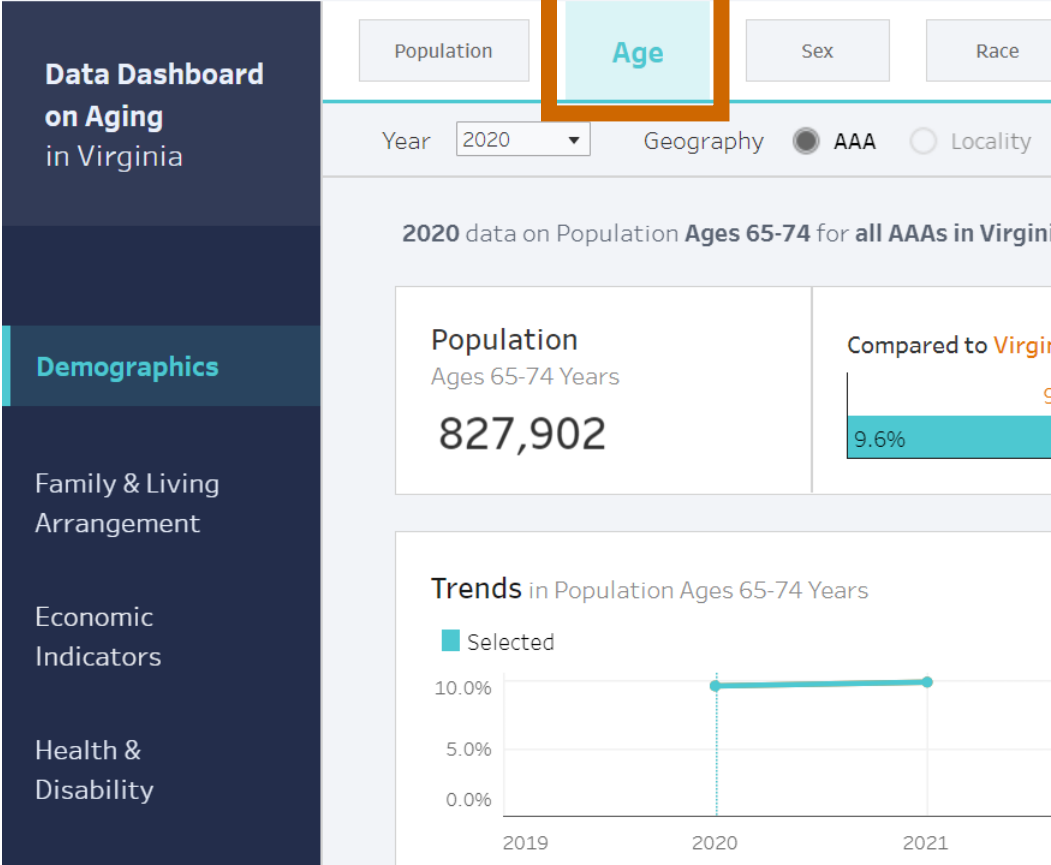
5. Informative Tooltips
6. Instructions on How to Use the Dashboard
7. Clear Citations for Data Sources per Variable
8. Simple Data Table Download



Pop Quiz!

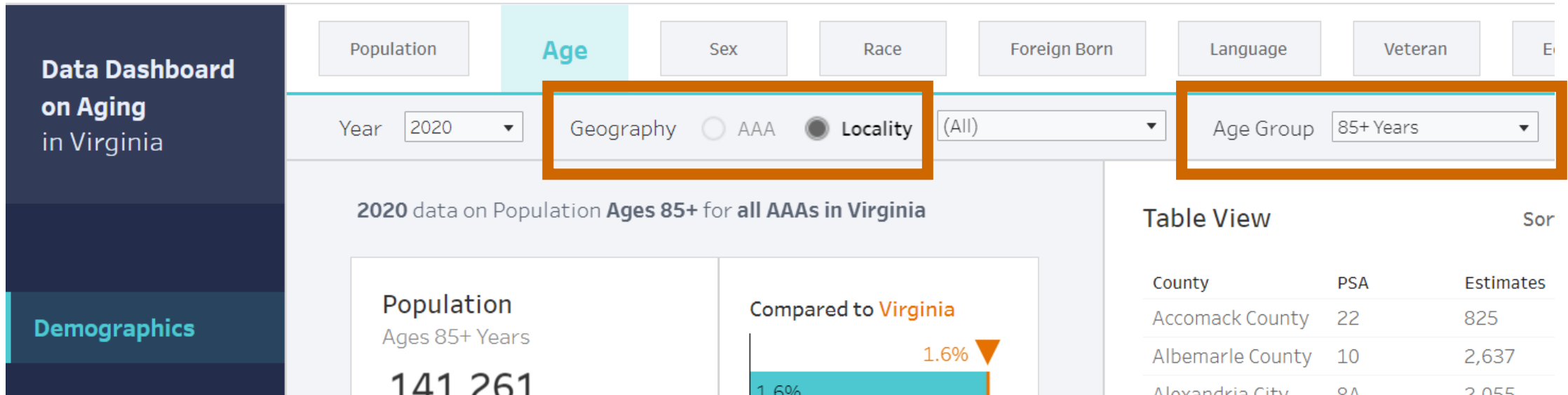
Which Locality in Virginia Has the
Highest Percentage of the **85+ Population**?

1. Category & Variable: Demographics → Age



2. Geography: Click “Locality”

3. Age Group: Click “85+ Years”



4. Table View: Click “Sort by Percent”

Age Sex Race Foreign Born Language Veteran Education

Geography AAA Locality (All) Age Group 85+ Years Reset Filters

Population Ages 85+ for all AAAs in Virginia

Compared to Virginia

1.6%

Population Ages 85+ Years

Table View

Sort by Locality Percent

| County | PSA | Estimates | Percent |
|-------------------|-------|-----------|---------|
| Lancaster County | 17-18 | 506 | 4.6% |
| Northumberland .. | 17-18 | 440 | 3.7% |
| Emporia City | 19 | 203 | 3.6% |
| Middlesex County | 17-18 | 369 | 3.5% |
| Mathews County | 17-18 | 284 | 3.3% |
| Northampton Cou.. | 22 | 401 | 3.3% |
| Bath County | 6 | 135 | 3.2% |
| Richmond County | 17-18 | 283 | 3.2% |
| Galax City | 3 | 208 | 3.1% |
| Rockbridge County | 6 | 665 | 2.9% |

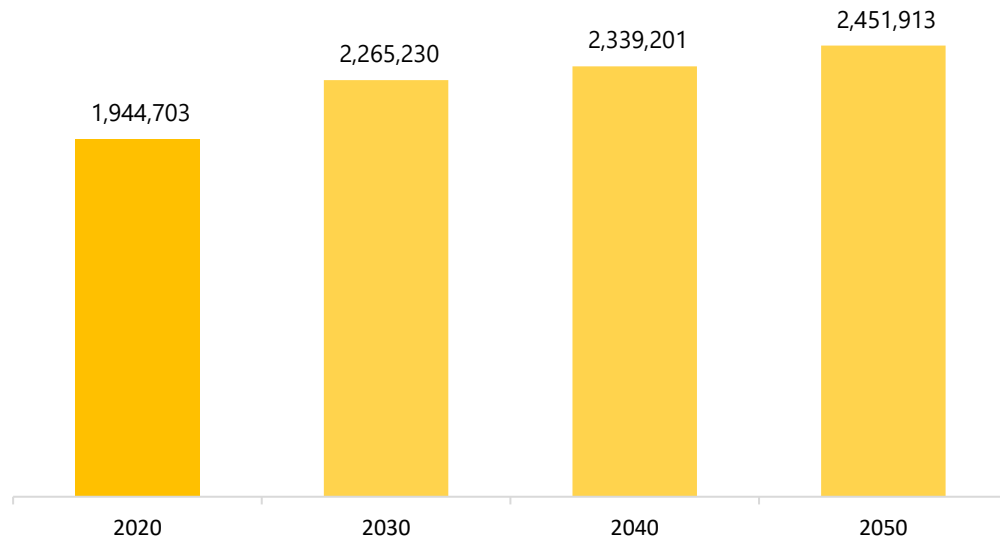


Projecting Virginia's Older Adult Population

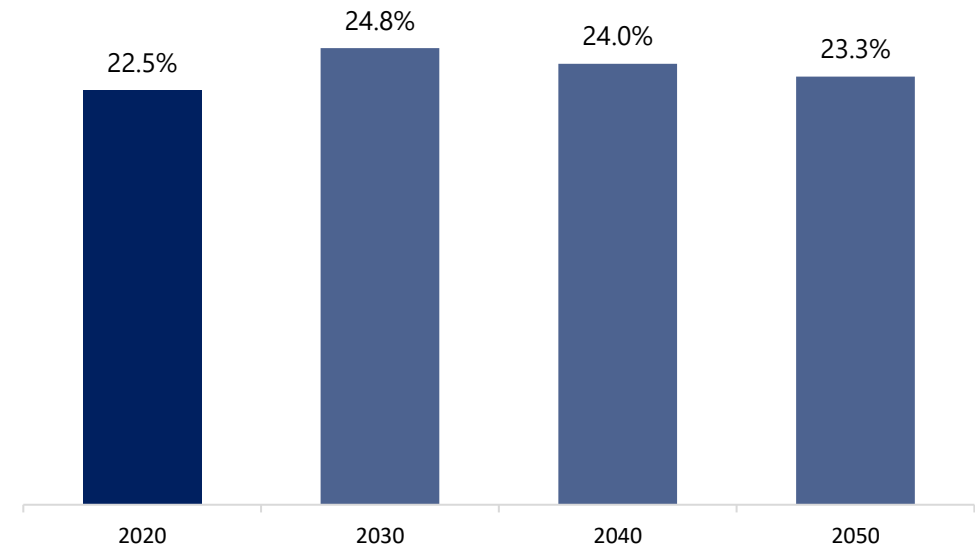
SHONEL SEN / PROJECTIONS PROGRAM MANAGER

Statewide Trends for Virginia

Population Size for 60+



Share of 60+ in Total population



Locality Level Projections for 2030

Top-5 localities with largest SIZE of 60+ population:

| LOCALITY | Population |
|-----------------------|------------|
| Fairfax County | 256,705 |
| Virginia Beach City | 120,475 |
| Prince William County | 104,669 |
| Chesterfield County | 100,632 |
| Loudoun County | 92,561 |

Top-5 localities with largest SHARE of 60+ population:

| LOCALITY | Percentage |
|-----------------------|------------|
| Lancaster County | 51.6% |
| Northumberland County | 50.8% |
| Highland County | 49.1% |
| Middlesex County | 45.0% |
| Mathews County | 43.8% |

Takeaways

- By 2030, 1 in 4 Virginians will be over age 60
- The number of older adults will continue to rise but their share in the total population will decline
- Several rural localities will have a significant share of their resident population composed of older adults

NOTE of CAUTION:

- *Projections always incorporate an amount of uncertainty*
- *They represent only one scenario of several possible futures*
- *They need to be updated periodically with latest input data*

<https://www.coopercenter.org/virginia-population-projections>

For any questions, please contact
sbaik@virginia.edu